

MOUNTING STEPS:

### Install the FT Sensor:

Attach the FT sensor to the robot flange of the UR robot using the ACC-SENS-MOUNT included in the kit. Ensure that all contact surfaces are clean and that the holes on the flange and the sensor are perfectly aligned to prevent misalignment or damage during the mounting process.

### Connect the Cable:

Use the supplied ACC-RJ45UR-M8-ANGLE cable to connect the FT sensor to the designated port located at the base of the UR control box.

Check the datasheet provided in the kit for detailed instructions to ensure proper cable orientation and secure connection points.

### Secure the Cable:


Organize the cable routing by using the ACC-SENS-CLAMP to avoid loose or dangling cables.

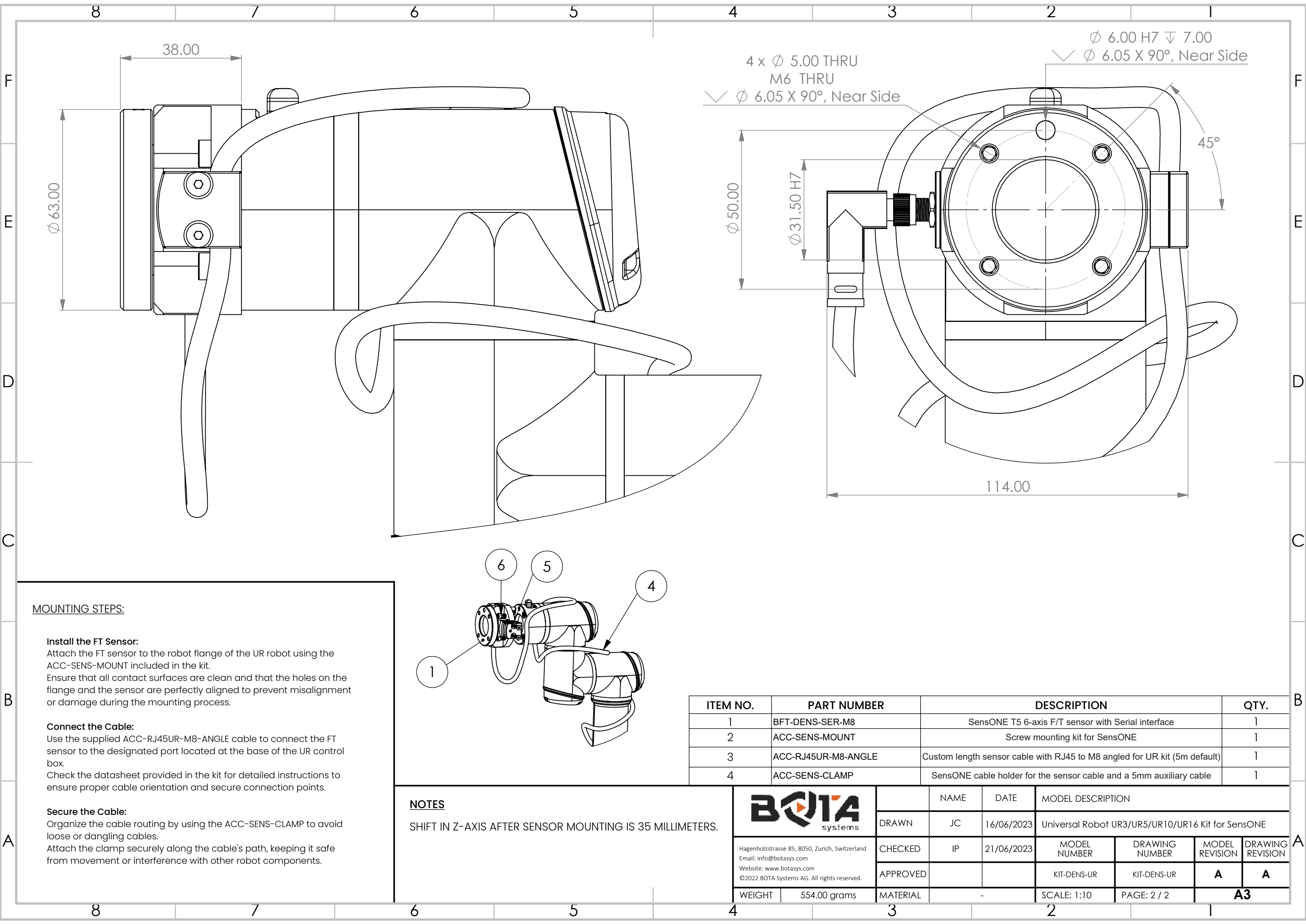
Attach the clamp securely along the cable's path, keeping it safe from movement or interference with other robot components.

## NOTES

SHIFT IN Z-AXIS AFTER SENSOR MOUNTING IS 35 MILLIMETERS.

ITEM NO.	PART NUMBER	DESCRIPTION	QTY.
1	BFT-SENS-SER-M8	SensONE T15 6-axis F/T sensor with Serial interface	1
2	ACC-SENS-MOUNT	Screw mounting kit for SensONE	1
3	ACC-RJ45UR-M8-ANGLE	Custom length sensor cable with RJ45 to M8 angled for UR kit (5m default)	1
4	ACC-SENS-CLAMP	SensONE cable holder for the sensor cable and a 5mm auxiliary cable	1

			NAME	DATE	MODEL DESCRIPTION			
		DRAWN	JC	16/06/2023	Universal Robot UR3/UR5/UR10/UR16 Kit for SensONE			
Hagenholzstrasse 85, 8050, Zurich, Switzerland Email: info@botasys.com Website: www.botasys.com ©2022 BOTA Systems AG. All rights reserved.		CHECKED	IP	21/06/2023	MODEL NUMBER	DRAWING NUMBER	MODEL REVISION	DRAWING REVISION
		APPROVED			KIT-SENS-UR	KIT-SENS-UR	A	A
WEIGHT	554.00 grams	MATERIAL	-		SCALE: 1:10	PAGE: 1 / 2	A3	

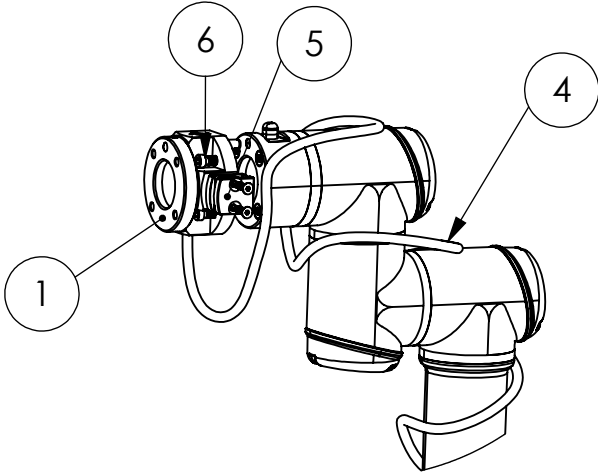


**MOUNTING STEPS:**

**Install the FT Sensor:**  
Attach the FT sensor to the robot flange of the UR robot using the ACC-SENS-MOUNT included in the kit. Ensure that all contact surfaces are clean and that the holes on the flange and the sensor are perfectly aligned to prevent misalignment or damage during the mounting process.


**Connect the Cable:**  
Use the supplied ACC-RJ45UR-M8-ANGLE cable to connect the FT sensor to the designated port located at the base of the UR control box. Check the datasheet provided in the kit for detailed instructions to ensure proper cable orientation and secure connection points.

**Secure the Cable:**  
Organize the cable routing by using the ACC-SENS-CLAMP to avoid loose or dangling cables. Attach the clamp securely along the cable's path, keeping it safe from movement or interference with other robot components.



**NOTES**  
SHIFT IN Z-AXIS AFTER SENSOR MOUNTING IS 35 MILLIMETERS.

ITEM NO.	PART NUMBER	DESCRIPTION		QTY.
1	BFT-DENS-SER-M8	SensONE T5 6-axis F/T sensor with Serial interface		1
2	ACC-SENS-MOUNT	Screw mounting kit for SensONE		1
3	ACC-RJ45UR-M8-ANGLE	Custom length sensor cable with RJ45 to M8 angled for UR kit (5m default)		1
4	ACC-SENS-CLAMP	SensONE cable holder for the sensor cable and a 5mm auxiliary cable		1

 Hagenholzstrasse 85, 8050, Zurich, Switzerland Email: info@botasys.com Website: www.botasys.com ©2022 BOTA Systems AG. All rights reserved.	DRAWN	JC	16/06/2023	Universal Robot UR3/UR5/UR10/UR16 Kit for SensONE			
	CHECKED	IP	21/06/2023	MODEL NUMBER	DRAWING NUMBER	MODEL REVISION	DRAWING REVISION
	APPROVED			KIT-DENS-UR	KIT-DENS-UR	A	A
WEIGHT	554.00 grams	MATERIAL	-	SCALE: 1:10	PAGE: 2 / 2	A3	