

MOUNTING STEPS:

Install the Bota Systems FT Sensor:
Secure the FT sensor to the robot flange of the UR20 or UR30 using the ACC-MENS-MOUNT provided in the kit. Ensure that all mounting surfaces are clean, and align the holes precisely to avoid damage during installation.


Connect the Cable:
Use the provided ACC-RJ45UR-M8-ANGLE cable to connect the FT sensor to the designated port at the base of the UR control box. For detailed guidance, refer to the datasheet included with the kit to ensure proper cable routing and secure connections.

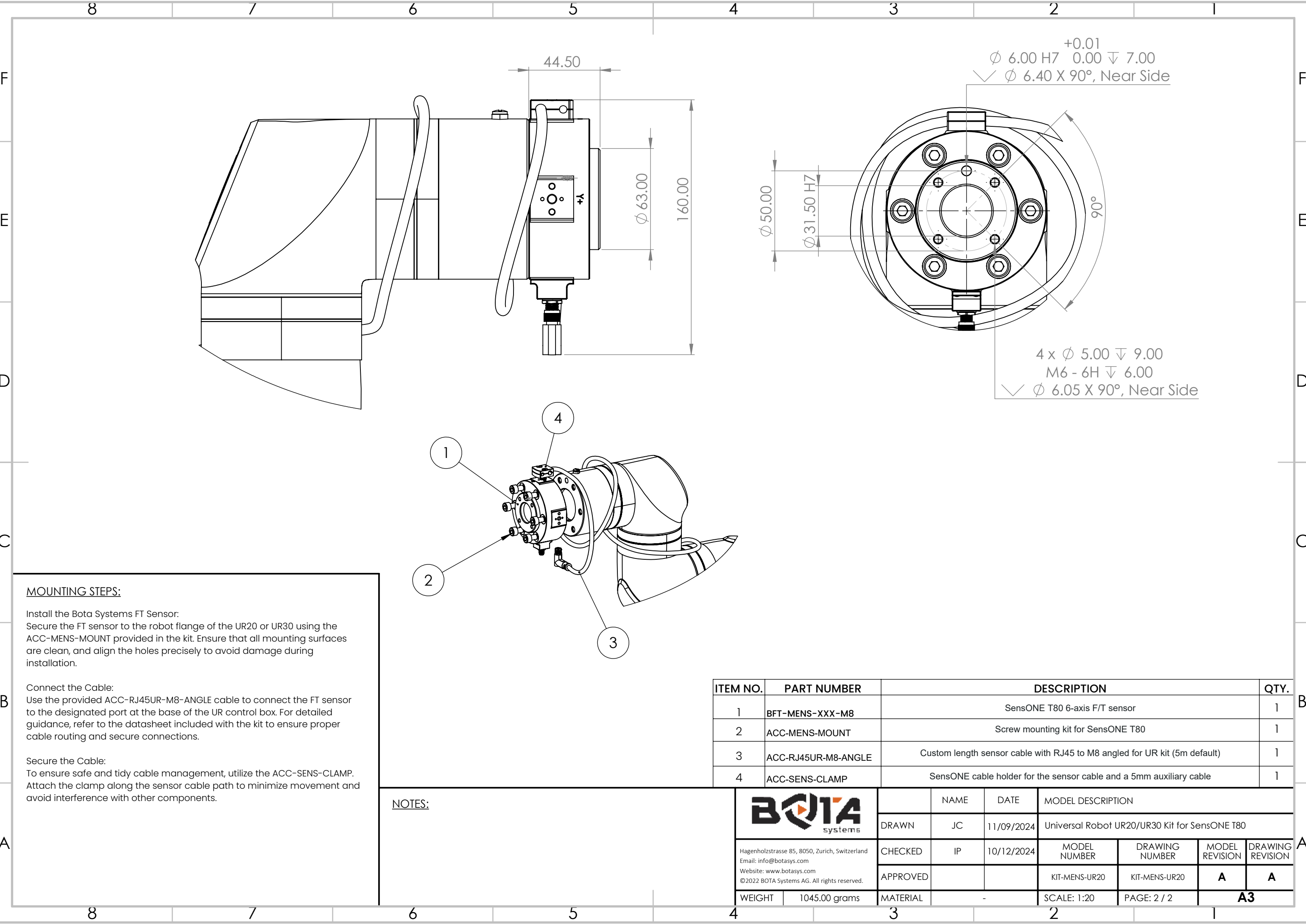
Secure the Cable:
To ensure safe and tidy cable management, utilize the ACC-SENS-CLAMP. Attach the clamp along the sensor cable path to minimize movement and avoid interference with other components.

Mount the ISO Adapter:
Attach the ACC-MENS-ISO-UR20 adapter to the ISO flange of the FT sensor. Use the included hardware for this step, ensuring that all bolts are properly tightened to the recommended torque specifications provided in the manual.

NOTES:

ITEM NO.	PART NUMBER	DESCRIPTION	QTY.
1	BFT-MENS-XXX-M8	SensONE T80 6-axis F/T sensor	1
2	ACC-MENS-MOUNT	Screw mounting kit for SensONE T80	1
3	ACC-RJ45UR-M8-ANGLE	Custom length sensor cable with RJ45 to M8 angled for UR kit (5m default)	1
4	ACC-SENS-CLAMP	SensONE cable holder for the sensor cable and a 5mm auxiliary cable	1
5	ACC-MENS-ISO-UR20	Accessory adapter to ISO 9404-1-80-6-M8	1

 Hagenholzstrasse 85, 8050, Zurich, Switzerland Email: info@botasys.com Website: www.botasys.com ©2022 BOTA Systems AG. All rights reserved.		NAME	DATE	MODEL DESCRIPTION			
	DRAWN	JC	11/09/2024	Universal Robot UR20/UR30 Kit for SensONE T80			
	CHECKED	IP	10/12/2024	MODEL NUMBER	DRAWING NUMBER	MODEL REVISION	DRAWING REVISION
	APPROVED			KIT-MENS-UR20-ISO	KIT-MENS-UR20-ISO	A	A
WEIGHT	1250.00 grams	MATERIAL	-	SCALE: 1:20	PAGE: 1 / 2	A3	



MOUNTING STEPS:


Install the Bota Systems FT Sensor:
Secure the FT sensor to the robot flange of the UR20 or UR30 using the ACC-MENS-MOUNT provided in the kit. Ensure that all mounting surfaces are clean, and align the holes precisely to avoid damage during installation.

Connect the Cable:
Use the provided ACC-RJ45UR-M8-ANGLE cable to connect the FT sensor to the designated port at the base of the UR control box. For detailed guidance, refer to the datasheet included with the kit to ensure proper cable routing and secure connections.

Secure the Cable:
To ensure safe and tidy cable management, utilize the ACC-SENS-CLAMP. Attach the clamp along the sensor cable path to minimize movement and avoid interference with other components.

NOTES:

ITEM NO.	PART NUMBER	DESCRIPTION	QTY.
1	BFT-MENS-XXX-M8	SensONE T80 6-axis F/T sensor	1
2	ACC-MENS-MOUNT	Screw mounting kit for SensONE T80	1
3	ACC-RJ45UR-M8-ANGLE	Custom length sensor cable with RJ45 to M8 angled for UR kit (5m default)	1
4	ACC-SENS-CLAMP	SensONE cable holder for the sensor cable and a 5mm auxiliary cable	1

 Hagenholzstrasse 85, 8050, Zurich, Switzerland Email: info@botasys.com Website: www.botasys.com ©2022 BOTA Systems AG. All rights reserved.		NAME	DATE	MODEL DESCRIPTION			
	DRAWN	JC	11/09/2024	Universal Robot UR20/UR30 Kit for SensONE T80			
	CHECKED	IP	10/12/2024	MODEL NUMBER	DRAWING NUMBER	MODEL REVISION	DRAWING REVISION
	APPROVED			KIT-MENS-UR20	KIT-MENS-UR20	A	A
WEIGHT	1045.00 grams	MATERIAL	-	SCALE: 1:20	PAGE: 2 / 2	A3	