

ITEM NO.	ORDERING NUMBER	DESCRIPTION	QTY.
1	BFT-SENS-SER-M8	SensONE T15 6-axis F/T sensor with Serial interface	1
2	ACC-SENS-MOUNT	Screw mounting kit for SensONE	1
3	ACC-RJ45-M8-3M-ANGLE	3.0m Cat 5e cable with angled M8 connector	1
4	ACC-KIN-GEN3	Accessory adapter for Kinova Gen3 to ISO 9409-1-50-4-M6 cobot flange with tool IO and ethernet	1
5	RQ-GRP-ES-CPL-062	Robotiq Gripper coupling for ISO flange	1
6	ACC-KIN-GEN3-BUMP	Protective bumper for Kinova adapter cable	1
7	ACC-USB-PROG	USB to RS422 Serial adapter with RJ45 connector	1

#### MOUNTING STEPS

1. Connect the Kinova adapter to the Gen3 robotic arm using the flex cable included on the ACC-KIN-GEN3
2. Properly place the adapter (ACC-KIN-GEN3) on the robotic arm, making sure to place the connector face on the opposite side from where the camera of the robot is located.
3. Use the screws included on the accessory to properly attach the adapter.
4. Place the Bota FT sensor on top using the correct mount (ACC-SENS-MOUNT), which includes screws and the pin.
5. Continue by adding the robotic gripper adapter (RQ\_GRP-ES-CPL-062), making sure to have the cable side of the adapter on the same side as the Kinova adapter ACC-KIN-GEN3) for the cable to be connected straight.
6. Finally, add the gripper, make sure to use the recommended screws and pins.

#### NOTES



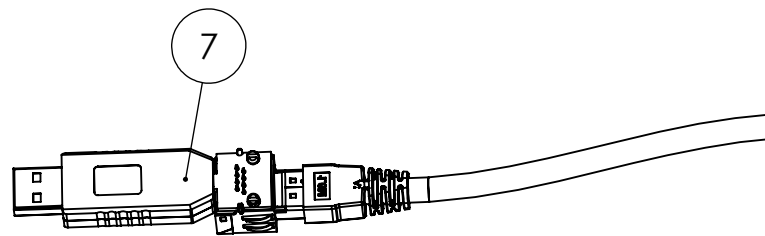
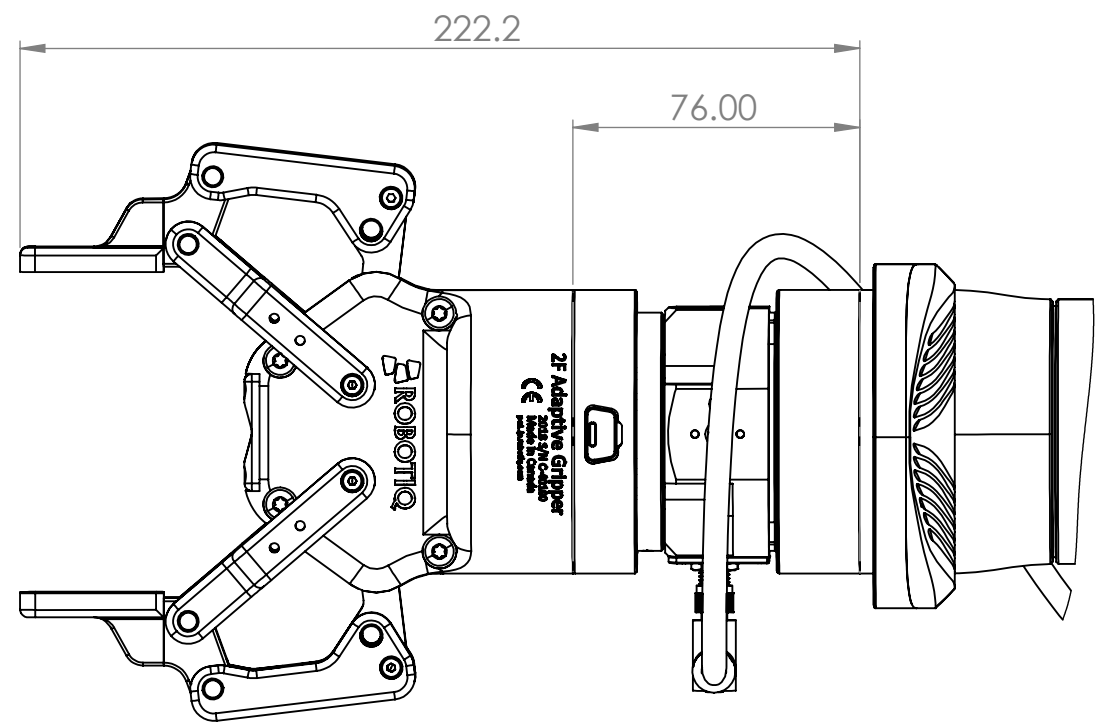
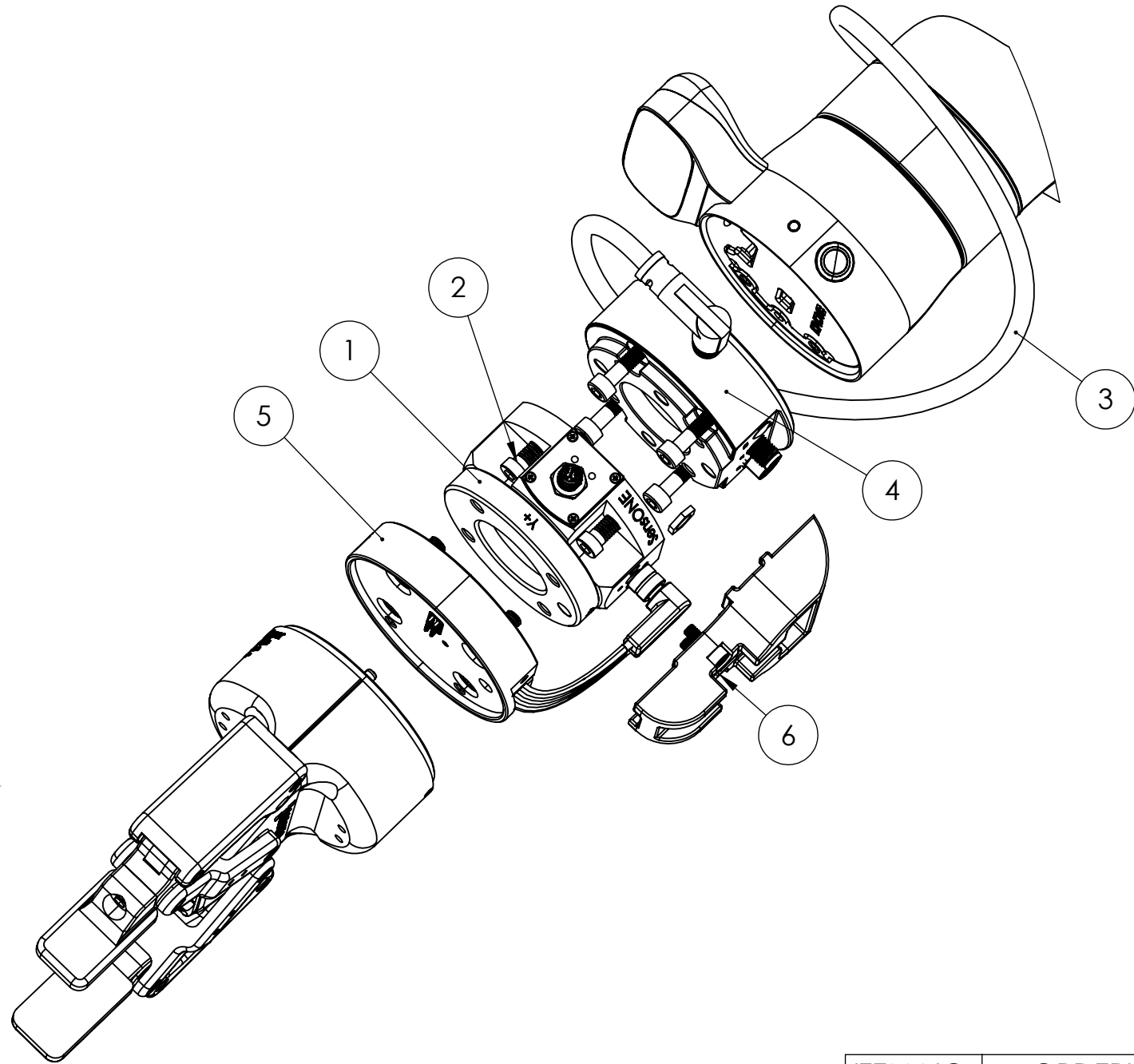
Hagenholzstrasse 85, 8050, Zurich, Switzerland  
Email: info@botasys.com  
Website: www.botasys.com  
©2022 BOTA Systems AG. All rights reserved.

#### PRODUCT DESCRIPTION

Kinova GEN3 SensONE Kit

ORDERING NUMBER	DRAWING NUMBER	MODEL REVISION	DRAWING REVISION
KIT-SSER-GEN3-ISO	KIT-SSER-GEN3-ISO	A	A
WEIGHT	897 grams	SCALE: 1:20	PAGE: 1 / 8

A3



ITEM NO.	ORDERING NUMBER	DESCRIPTION	QTY.
1	BFT-DENS-SER-M8	SensONE T5 6-axis F/T sensor with Serial interface	1
2	ACC-SENS-MOUNT	Screw mounting kit for SensONE	1
3	ACC-RJ45-M8-3M-ANGLE	3.0m Cat 5e cable with angled M8 connector	1
4	ACC-KIN-GEN3	Accessory adapter for Kinova Gen3 to ISO 9409-1-50-4-M6 cobot flange with tool IO and ethernet	1
5	RQ-GRP-ES-CPL-062	Robotiq Gripper coupling for ISO flange	1
6	ACC-KIN-GEN3-BUMP	Protective bumper for Kinova adapter cable	1
7	ACC-USB-PROG	USB to RS422 Serial adapter with RJ45 connector	1

#### MOUNTING STEPS

- Connect the Kinova adapter to the Gen3 robotic arm using the flex cable included on the ACC-KIN-GEN3
- Properly place the adapter (ACC-KIN-GEN3) on the robotic arm, making sure to place the connector face on the opposite side from where the camera of the robot is located.
- Use the screws included on the accessory to properly attach the adapter.
- Place the Bota FT sensor on top using the correct mount (ACC-SENS-MOUNT), which includes screws and the pin.
- Continue by adding the robotic gripper adapter (RQ\_GRP-ES-CPL-062), making sure to have the cable side of the adapter on the same side as the Kinova adapter ACC-KIN-GEN3) for the cable to be connected straight.
- Finally, add the gripper, make sure to use the recommended screws and pins.

#### NOTES



Hagenholzstrasse 85, 8050, Zurich, Switzerland  
Email: [info@botasys.com](mailto:info@botasys.com)  
Website: [www.botasys.com](http://www.botasys.com)  
©2022 BOTA Systems AG. All rights reserved.

WEIGHT 897 grams

#### PRODUCT DESCRIPTION

Kinova GEN3 SensONE Kit

ORDERING  
NUMBER

DRAWING  
NUMBER

MODEL  
REVISION

DRAWING  
REVISION

KIT-DSER-GEN3-ISO

KIT-DSER-GEN3-ISO

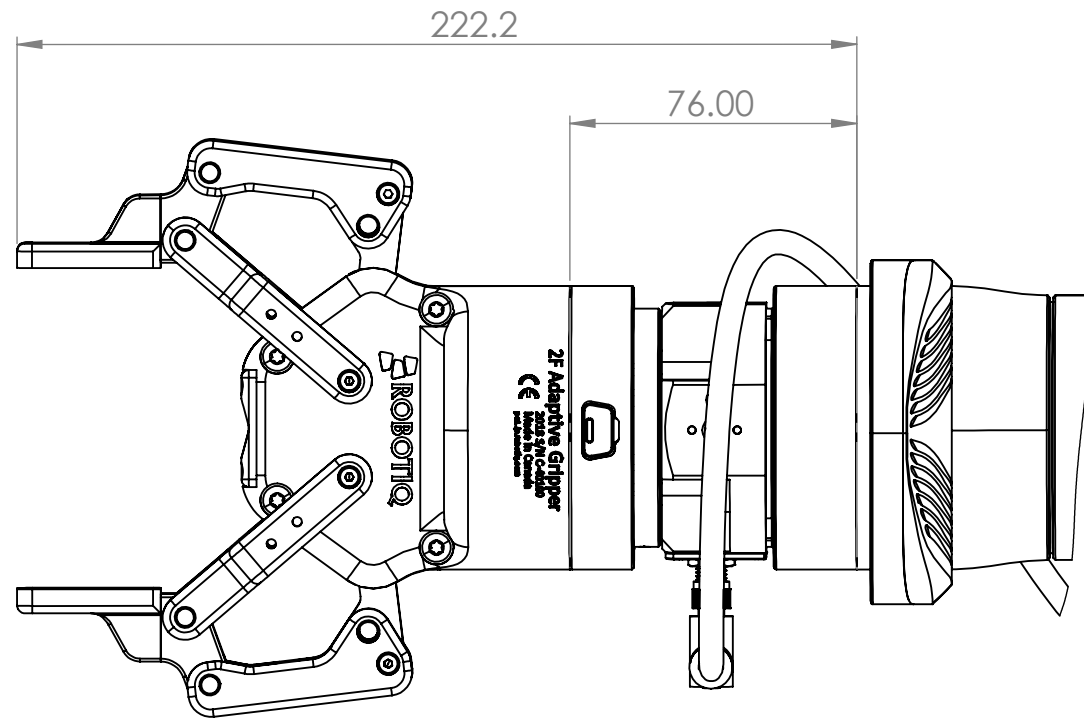
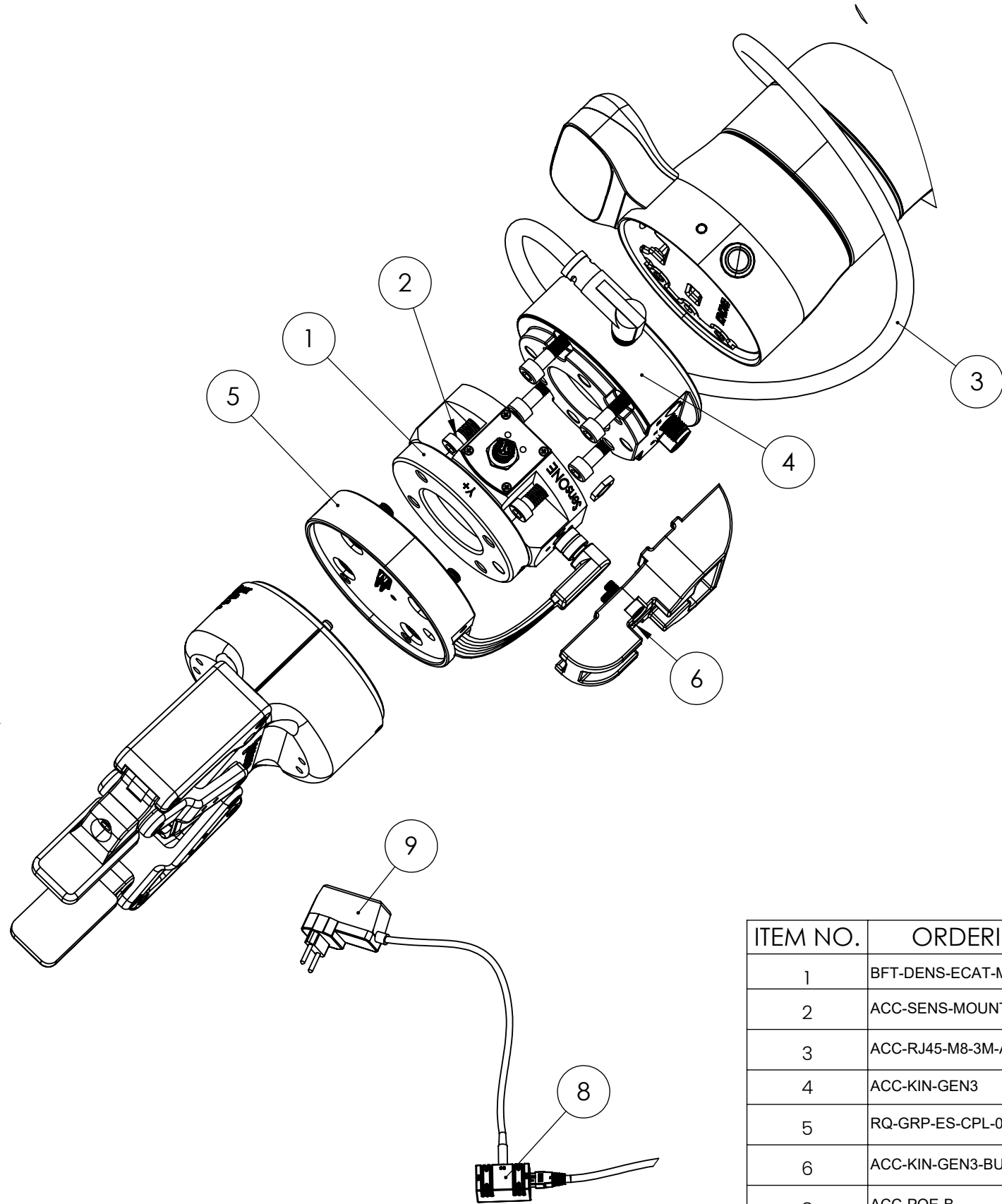
A

A

SCALE: 1:20

PAGE: 2 / 8

A3



ITEM NO.	ORDERING NUMBER	DESCRIPTION	QTY.
1	BFT-DENS-ECAT-M8	SensONE T5 6-axis F/T sensor with EtherCAT interface	1
2	ACC-SENS-MOUNT	Screw mounting kit for SensONE	1
3	ACC-RJ45-M8-3M-ANGLE	3.0m Cat 5e cable with angled M8 connector	1
4	ACC-KIN-GEN3	Accessory adapter for Kinova Gen3 to ISO 9409-1-50-4-M6 cobot flange with tool IO and ethernet	1
5	RQ-GRP-ES-CPL-062	Robotiq Gripper coupling for ISO flange	1
6	ACC-KIN-GEN3-BUMP	Protective bumper for Kinova adapter cable	1
8	ACC-POE-B	PoE injector 802.3af mode B	1
9	ACC-PSU-12V-GLOBAL	Power adapter 12V 12W global plug	1

#### MOUNTING STEPS

1. Connect the Kinova adapter to the Gen3 robotic arm using the flex cable included on the ACC-KIN-GEN3
2. Properly place the adapter (ASS-KIN-GEN3) on the robotic arm, making sure to place the connector face on the opposite side from where the camera of the robot is located.
3. Use the screws included on the accessory to properly attach the adapter.
4. Place the Bota FT sensor on top using the correct mount (ACC-SENS-MOUNT), which includes screws and the pin.
5. Continue by adding the robotic gripper adapter (RQ\_GRP-ES-CPL-062), making sure to have the cable side of the adapter on the same side as the Kinova adapter ACC-KIN-GEN3) for the cable to be connected straight.
6. Finally, add the gripper, make sure to use the recommended screws and pins.

#### NOTES



Hagenholzstrasse 85, 8050, Zurich, Switzerland  
Email: [info@botasys.com](mailto:info@botasys.com)  
Website: [www.botasys.com](http://www.botasys.com)  
©2022 BOTA Systems AG. All rights reserved.

#### PRODUCT DESCRIPTION

Kinova GEN3 SensONE Kit

ORDERING  
NUMBER

DRAWING  
NUMBER

MODEL  
REVISION

DRAWING  
REVISION

KIT-DECAT-GEN3-ISO

KIT-DECAT-GEN3-ISO

A

A

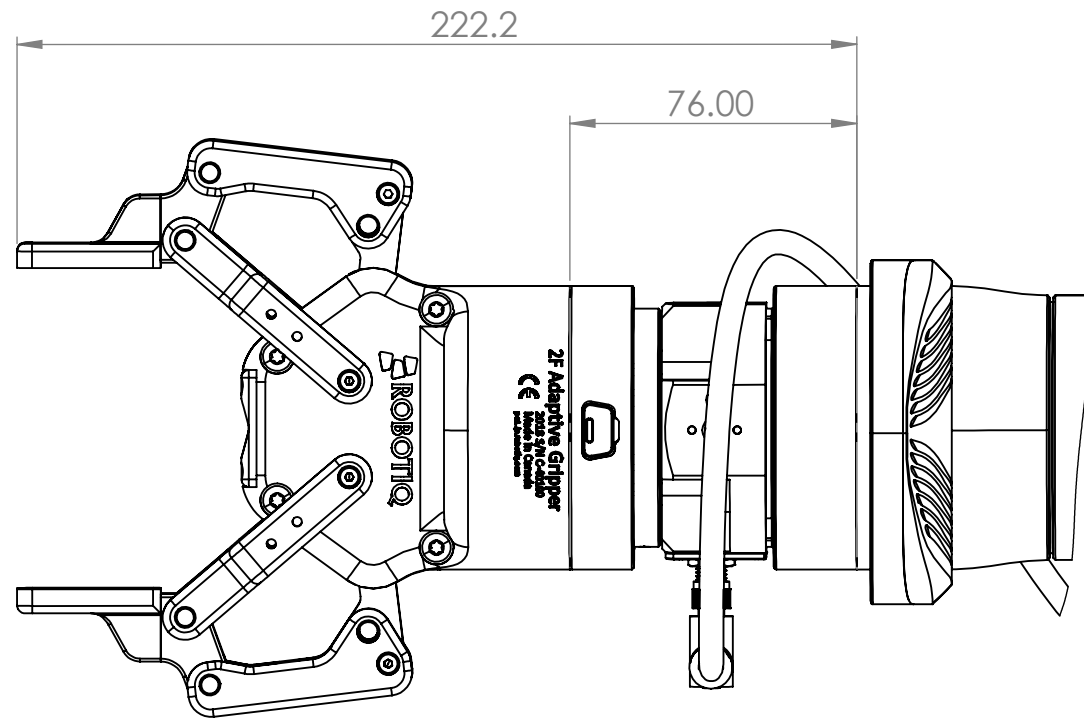
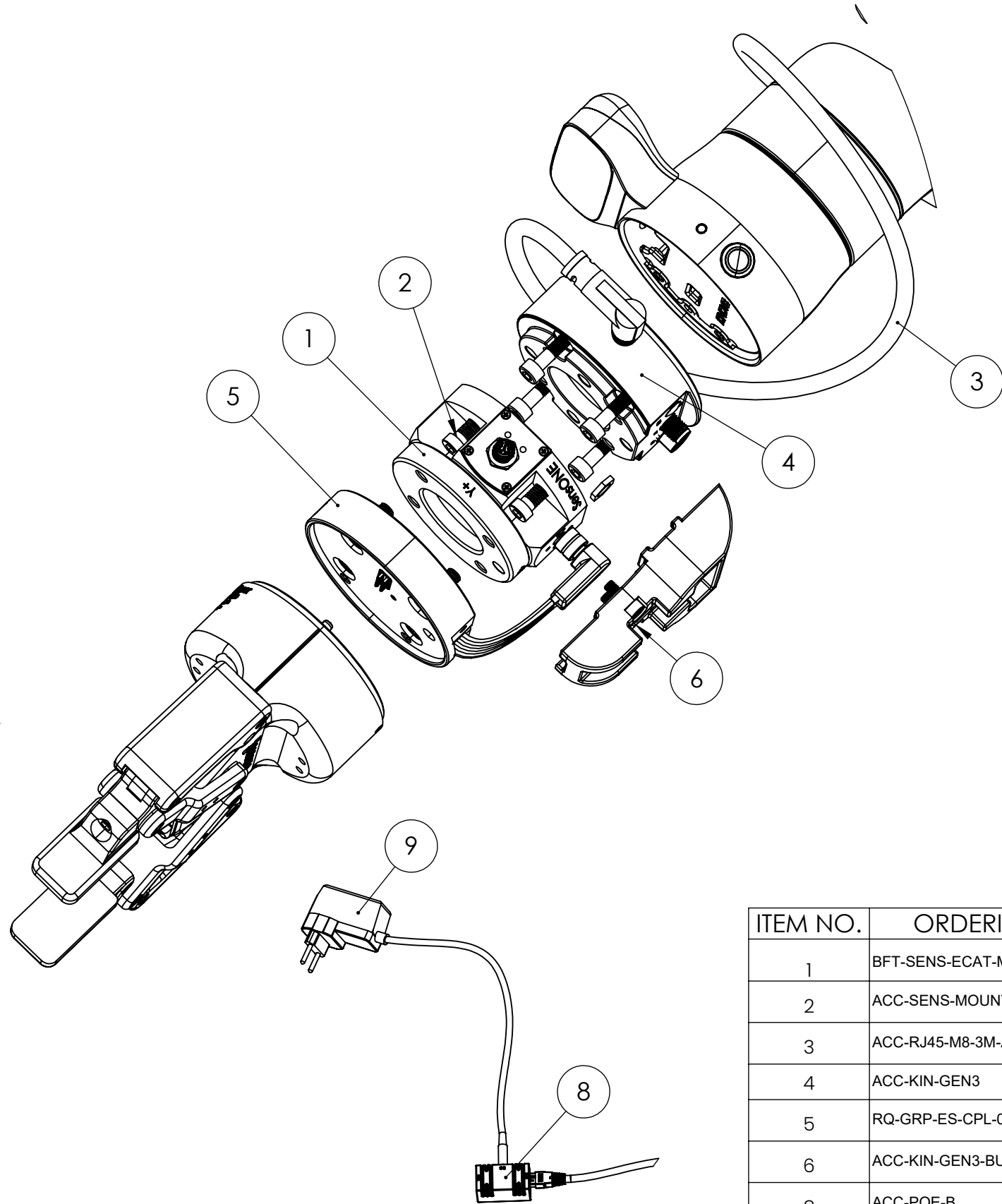
WEIGHT

1020 grams

SCALE: 1:20

PAGE: 3 / 8

A3



ITEM NO.	ORDERING NUMBER	DESCRIPTION	QTY.
1	BFT-SENS-ECAT-M8	SensONE T15 6-axis F/T sensor with EtherCAT interface, best resolution and additional IMU	1
2	ACC-SENS-MOUNT	Screw mounting kit for SensONE	1
3	ACC-RJ45-M8-3M-ANGLE	3.0m Cat 5e cable with angled M8 connector	1
4	ACC-KIN-GEN3	Accessory adapter for Kinova Gen3 to ISO 9409-1-50-4-M6 cobot flange with tool IO and ethernet	1
5	RQ-GRP-ES-CPL-062	Robotiq Gripper coupling for ISO flange	1
6	ACC-KIN-GEN3-BUMP	Protective bumper for Kinova adapter cable	1
8	ACC-POE-B	PoE injector 802.3af mode B	1
9	ACC-PSU-12V-GLOBAL	Power adapter 12V 12W global plug	1

#### MOUNTING STEPS

- Connect the Kinova adapter to the Gen3 robotic arm using the flex cable included on the ACC-KIN-GEN3
- Properly place the adapter (ASS-KIN-GEN3) on the robotic arm, making sure to place the connector face on the opposite side from where the camera of the robot is located.
- Use the screws included on the accessory to properly attach the adapter.
- Place the Bota FT sensor on top using the correct mount (ACC-SENS-MOUNT), which includes screws and the pin.
- Continue by adding the robotic gripper adapter (RQ\_GRP-ES-CPL-062), making sure to have the cable side of the adapter on the same side as the Kinova adapter ACC-KIN-GEN3) for the cable to be connected straight.
- Finally, add the gripper, make sure to use the recommended screws and pins.

#### NOTES



Hagenholzstrasse 85, 8050, Zurich, Switzerland  
Email: info@botasys.com  
Website: www.botasys.com  
©2022 BOTA Systems AG. All rights reserved.

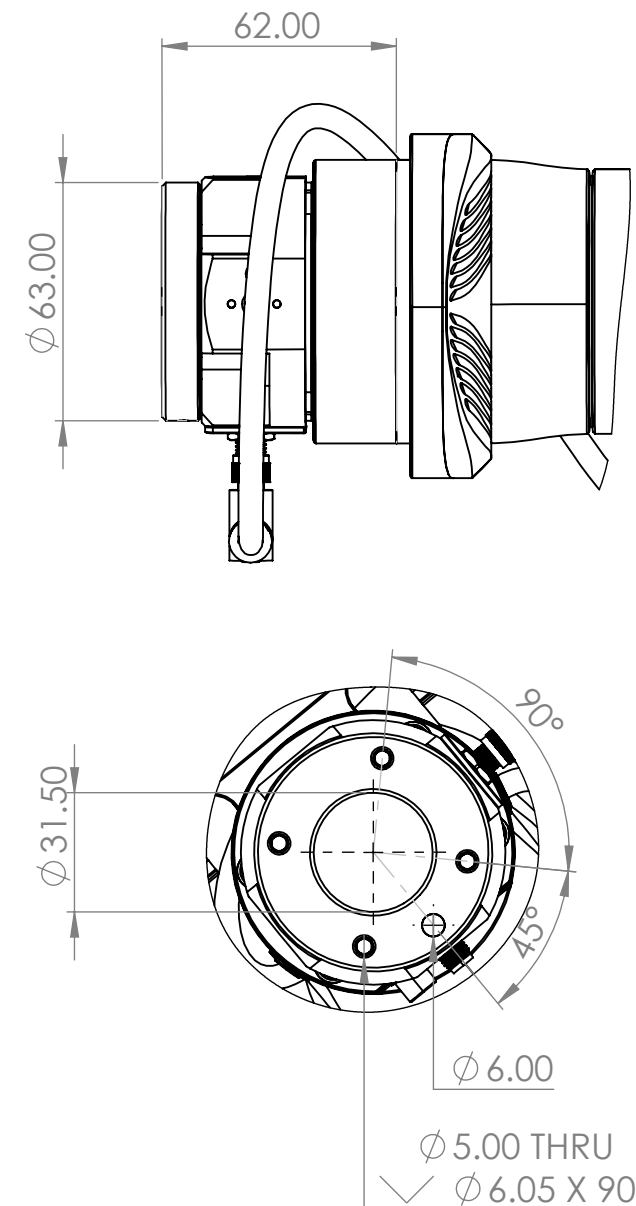
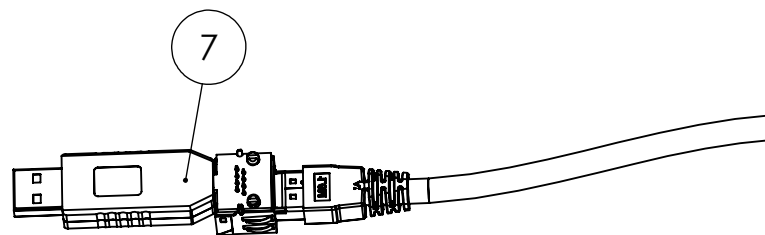
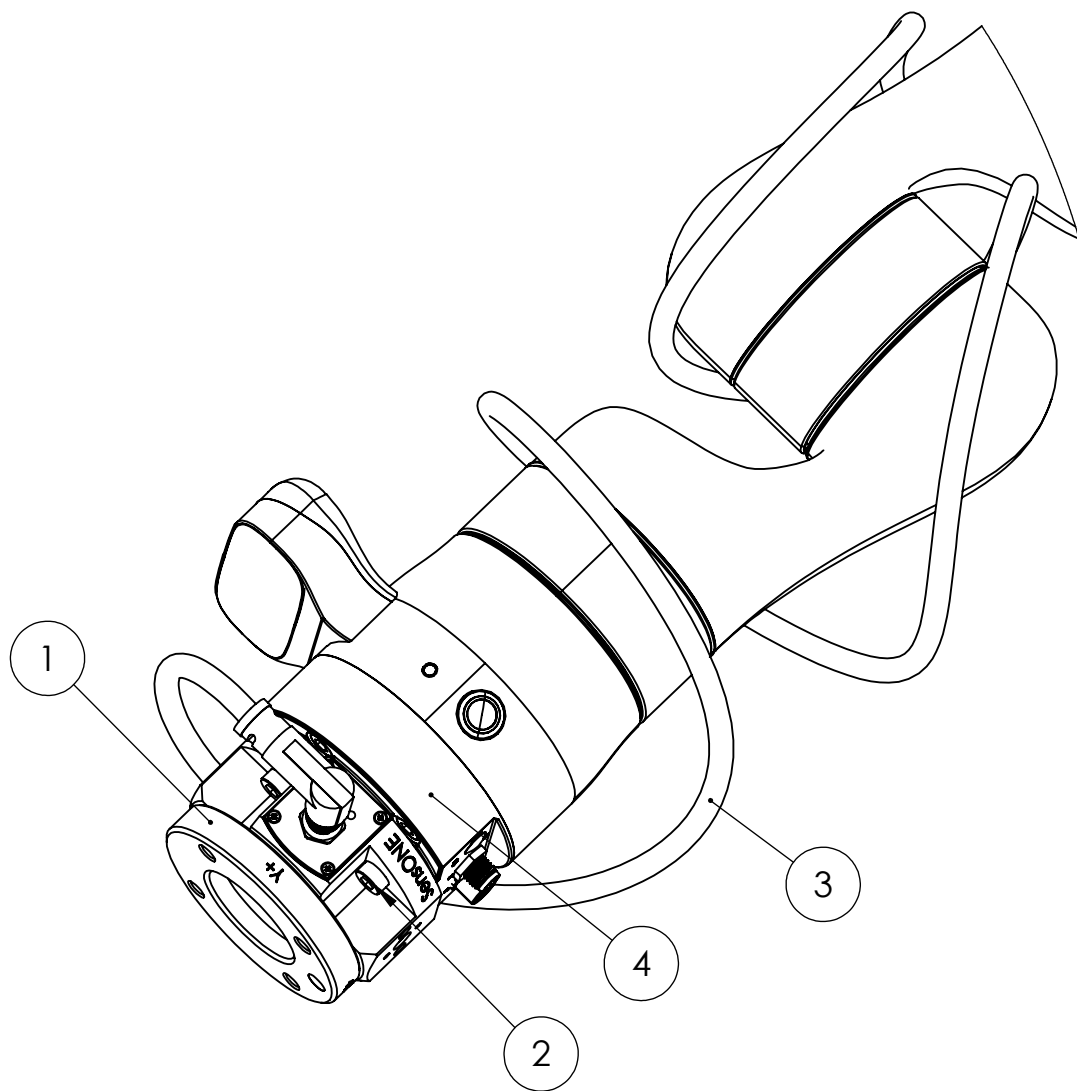
#### PRODUCT DESCRIPTION

Kinova GEN3 SensONE Kit

ORDERING NUMBER	DRAWING NUMBER	MODEL REVISION	DRAWING REVISION
KIT-SECAT-GEN3-ISO	KIT-SECAT-GEN3-ISO	A	A
WEIGHT	1020 grams	SCALE: 1:20	PAGE: 4 / 8

A3





ITEM NO.	ORDERING NUMBER	DESCRIPTION	QTY.
1	BFT-SENS-SER-M8	SensONE T15 6-axis F/T sensor with Serial interface	1
2	ACC-SENS-MOUNT	Screw mounting kit for SensONE	1
3	ACC-RJ45-M8-3M-ANGLE	3.0m Cat 5e cable with angled M8 connector	1
4	ACC-KIN-GEN3	Accessory adapter for Kinova Gen3 to ISO 9409-1-50-4-M6 cobot flange with tool IO and ethernet	1
7	ACC-USB-PROG	USB to RS422 Serial adapter with RJ45 connector	1

#### MOUNTING STEPS

1. Connect the Kinova adapter to the Gen3 robotic arm using the flex cable included on the ACC-KIN-GEN3
2. Properly place the adapter (ASS-KIN-GEN3) on the robotic arm, making sure to place the connector face on the opposite side from where the camera of the robot is located.
3. Use the screws included on the accessory to properly attach the adapter.
4. Place the Bota FT sensor on top using the correct mount (ACC-SENS-MOUNT), which includes screws and the pin.

#### NOTES



Hagenholzstrasse 85, 8050, Zurich, Switzerland  
Email: [info@botasys.com](mailto:info@botasys.com)  
Website: [www.botasys.com](http://www.botasys.com)  
© 2022 BOTA Systems AG. All rights reserved.

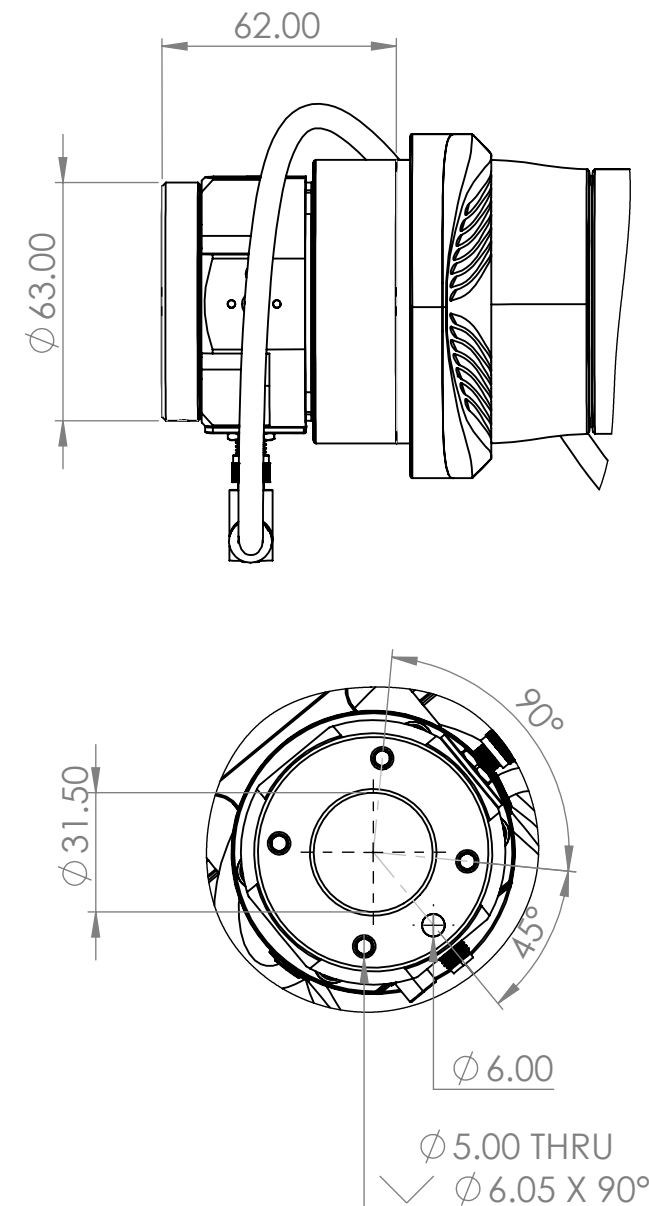
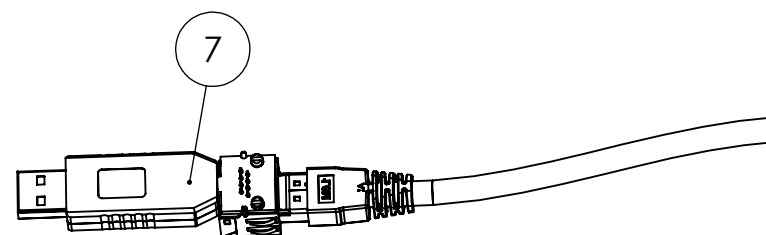
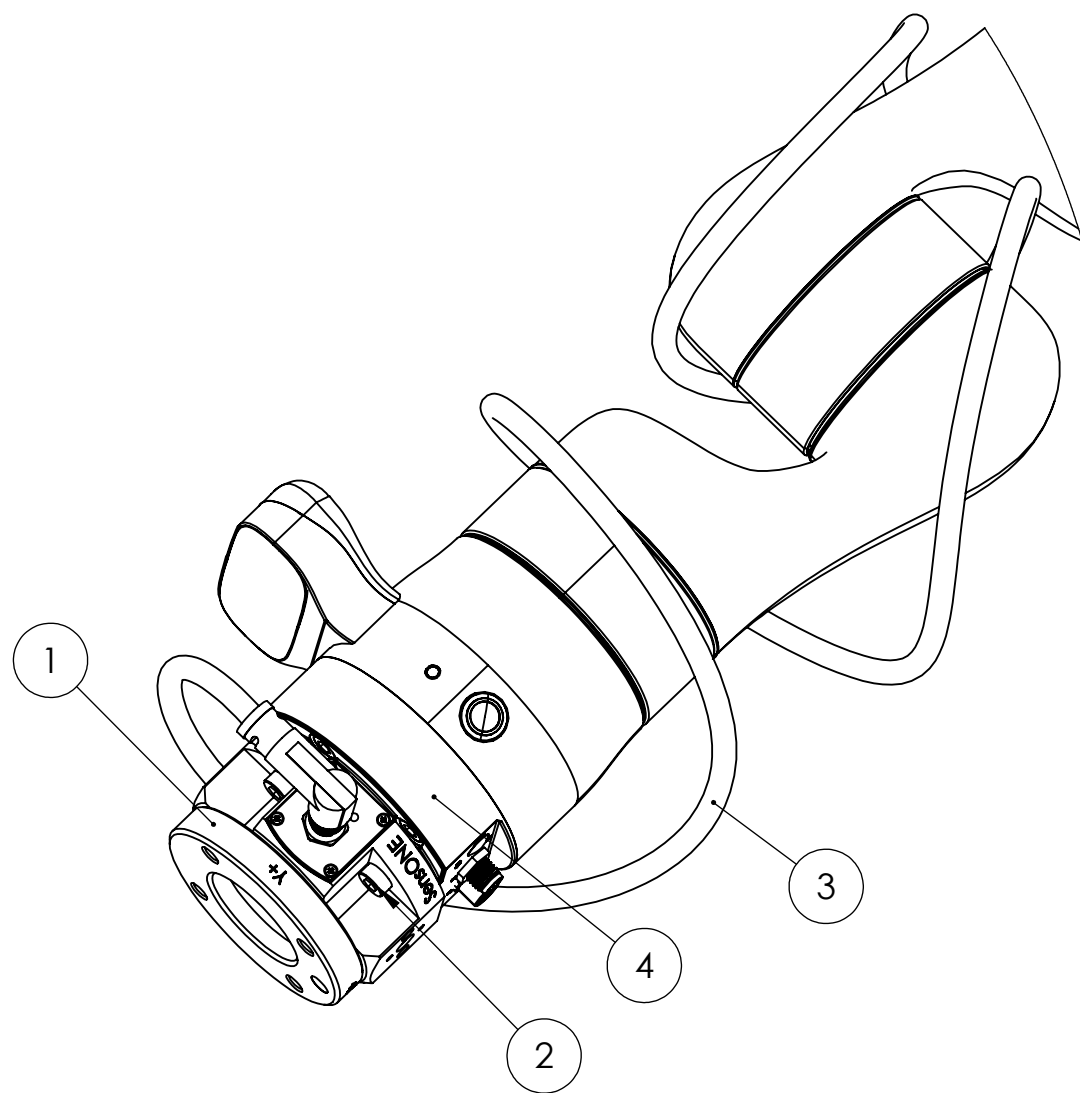
WEIGHT 725 grams

#### PRODUCT DESCRIPTION

Kinova GEN3 SensONE Kit

ORDERING NUMBER	DRAWING NUMBER	MODEL REVISION	DRAWING REVISION
KIT-SSER-GEN3	KIT-SSER-GEN3	A	A
SCALE: 1:20		PAGE: 5 / 8	

A3



ITEM NO.	ORDERING NUMBER	DESCRIPTION	QTY.
1	BFT-DENS-SER-M8	SensONE T5 6-axis F/T sensor with Serial interface	1
2	ACC-SENS-MOUNT	Screw mounting kit for SensONE	1
3	ACC-RJ45-M8-3M-ANGLE	3.0m Cat 5e cable with angled M8 connector	1
4	ACC-KIN-GEN3	Accessory adapter for Kinova Gen3 to ISO 9409-1-50-4-M6 cobot flange with tool IO and ethernet	1
7	ACC-USB-PROG	USB to RS422 Serial adapter with RJ45 connector	1

#### MOUNTING STEPS

1. Connect the Kinova adapter to the Gen3 robotic arm using the flex cable included on the ACC-KIN-GEN3
2. Properly place the adapter (ASS-KIN-GEN3) on the robotic arm, making sure to place the connector face on the opposite side from where the camera of the robot is located.
3. Use the screws included on the accessory to properly attach the adapter.
4. Place the Bota FT sensor on top using the correct mount (ACC-SENS-MOUNT), which includes screws and the pin.

#### NOTES



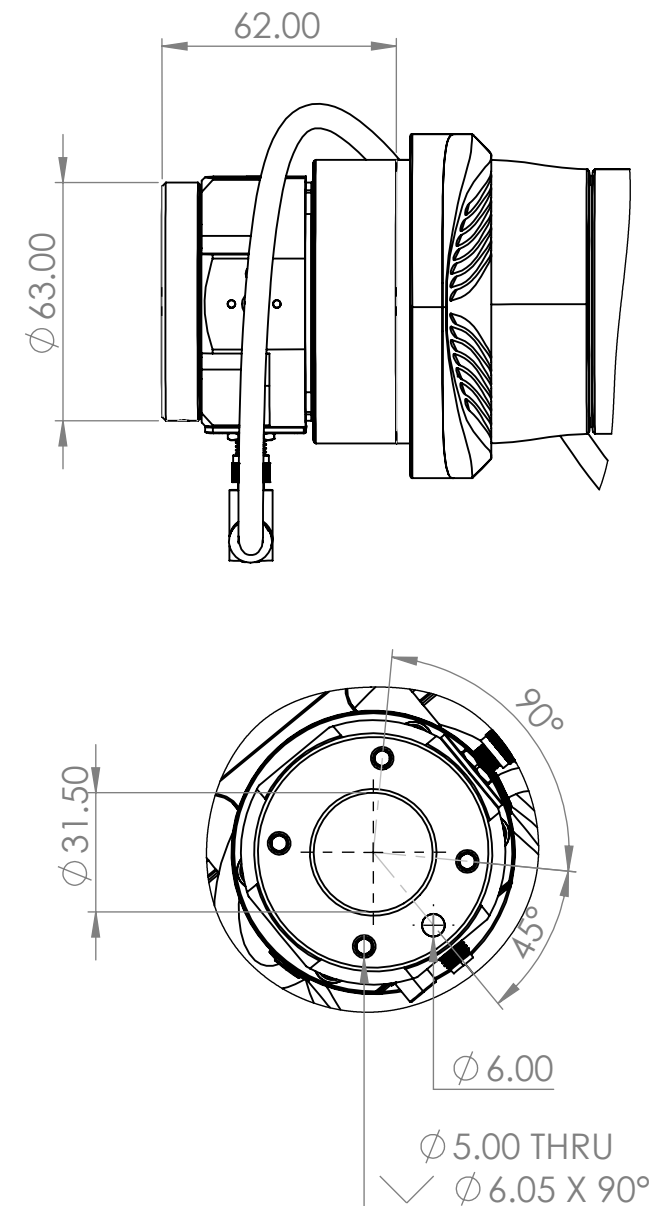
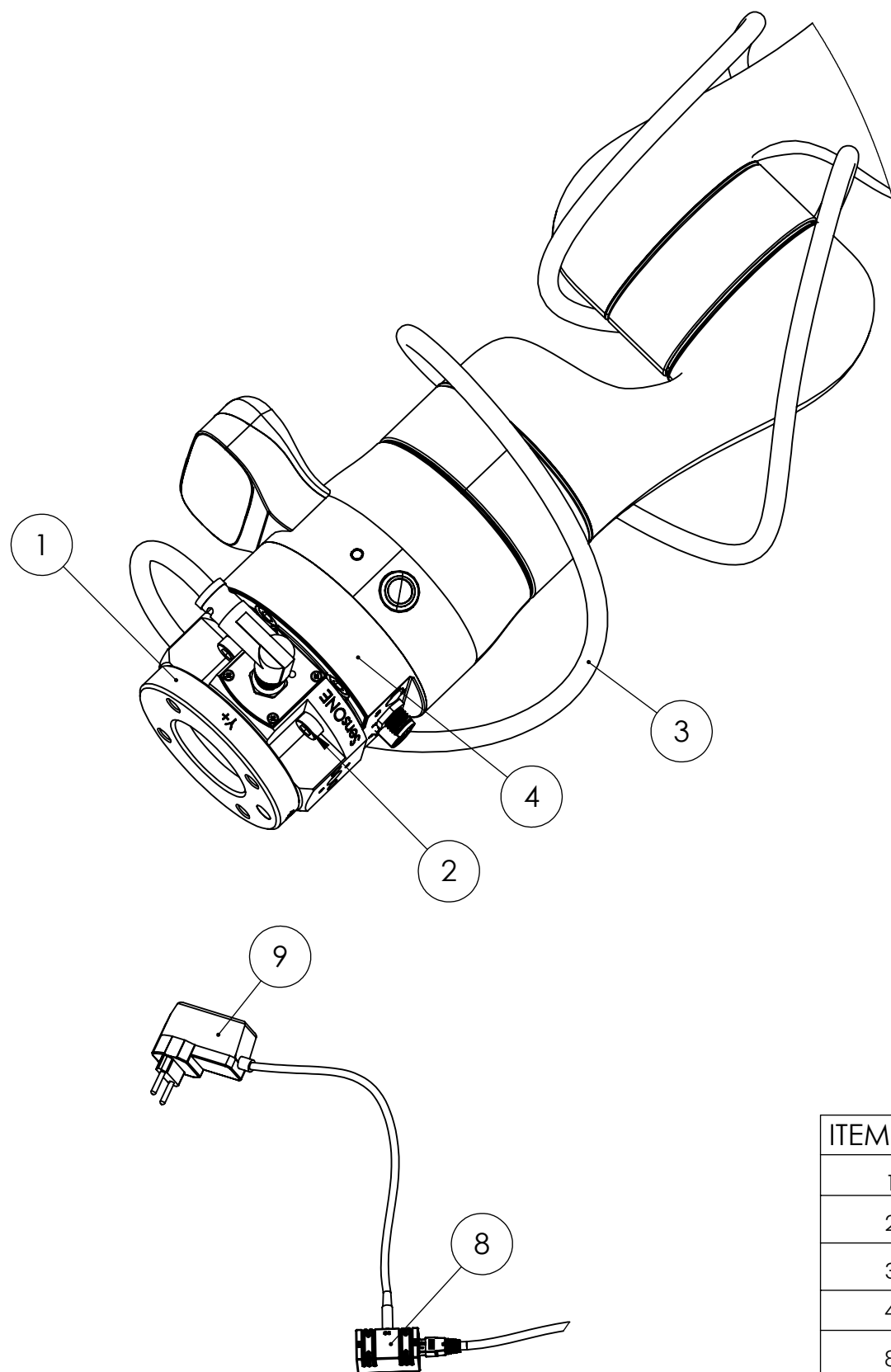
Hagenholzstrasse 85, 8050, Zurich, Switzerland  
Email: info@botasys.com  
Website: www.botasys.com  
© 2022 BOTA Systems AG. All rights reserved.

#### PRODUCT DESCRIPTION

Kinova GEN3 SensONE Kit

ORDERING NUMBER	DRAWING NUMBER	MODEL REVISION	DRAWING REVISION
KIT-DSER-GEN3	KIT-DSER-GEN3	A	A
WEIGHT	725 grams	SCALE: 1:20	PAGE: 6 / 8

A3



ITEM NO.	ORDERING NUMBER	DESCRIPTION	QTY.
1	BFT-DENS-ECAT-M8	SensONE T5 6-axis F/T sensor with EtherCAT interface	1
2	ACC-SENS-MOUNT	Screw mounting kit for SensONE	1
3	ACC-RJ45-M8-3M-ANGLE	3.0m Cat 5e cable with angled M8 connector	1
4	ACC-KIN-GEN3	Accessory adapter for Kinova Gen3 to ISO 9409-1-50-4-M6 cobot flange with tool IO and ethernet	1
8	ACC-POE-B	PoE injector 802.3af mode B	1
9	ACC-PSU-12V-GLOBAL	Power adapter 12V 12W global plug	1

#### MOUNTING STEPS

1. Connect the Kinova adapter to the Gen3 robotic arm using the flex cable included on the ACC-KIN-GEN3
2. Properly place the adapter (ASS-KIN-GEN3) on the robotic arm, making sure to place the connector face on the opposite side from where the camera of the robot is located.
3. Use the screws included on the accessory to properly attach the adapter.
4. Place the Bota FT sensor on top using the correct mount (ACC-SENS-MOUNT), which includes screws and the pin.

#### NOTES



Hagenholzstrasse 85, 8050, Zurich, Switzerland  
Email: [info@botasys.com](mailto:info@botasys.com)  
Website: [www.botasys.com](http://www.botasys.com)  
©2022 BOTA Systems AG. All rights reserved.

WEIGHT 843 grams

#### PRODUCT DESCRIPTION

Kinova GEN3 SensONE Kit

ORDERING  
NUMBER

DRAWING  
NUMBER

MODEL  
REVISION

DRAWING  
REVISION

KIT-DECAT-GEN3

KIT-DECAT-GEN3

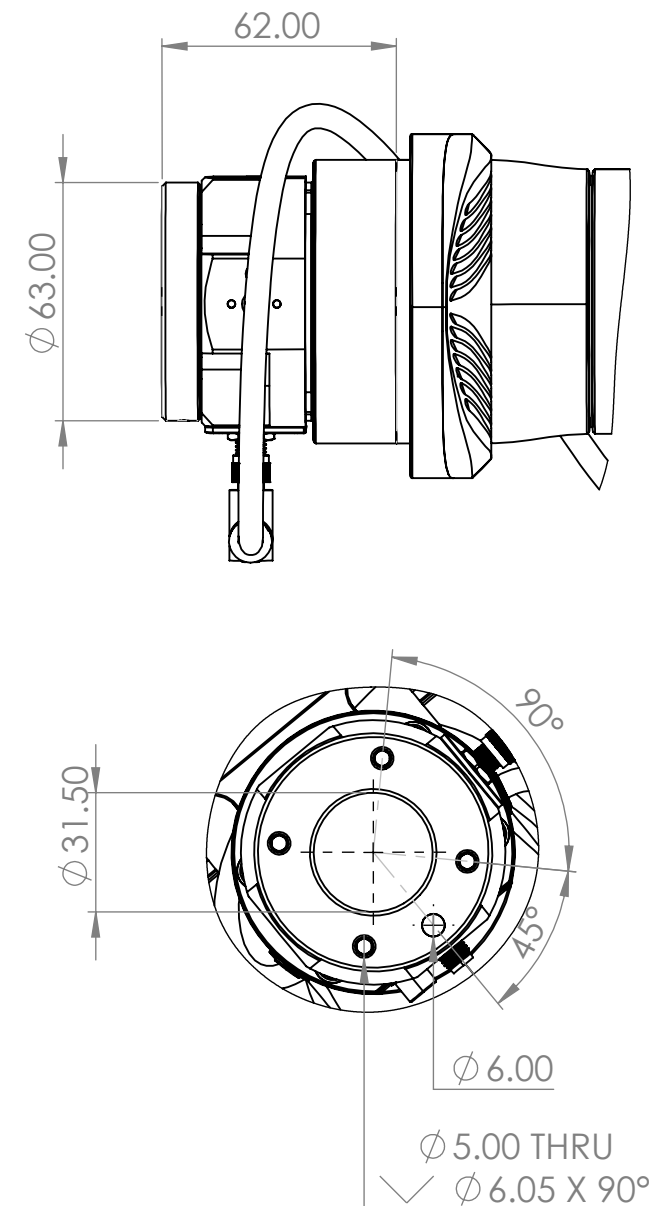
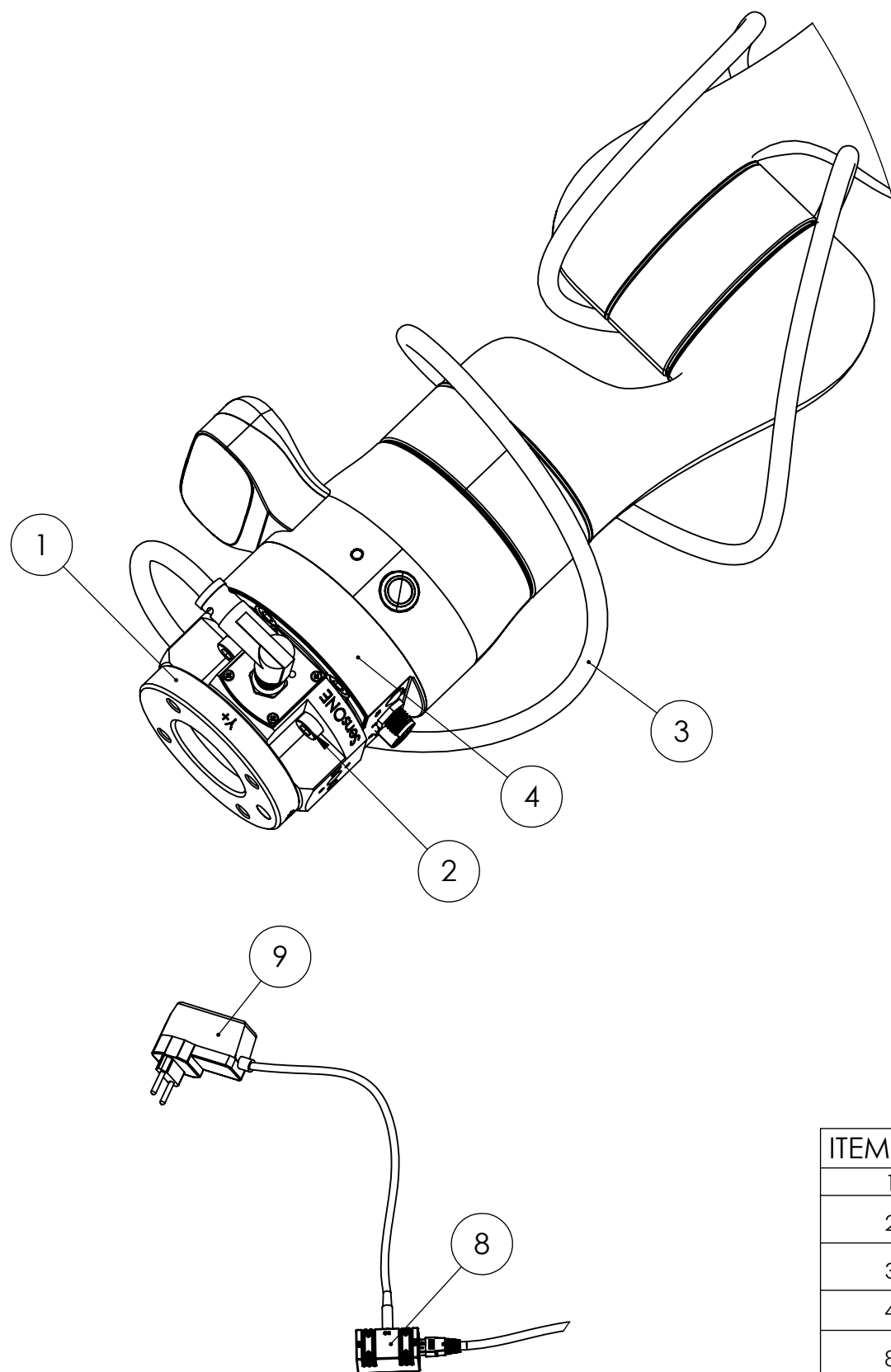
A

A

SCALE: 1:20

PAGE: 7 / 8

A3



ITEM NO.	ORDERING NUMBER	DESCRIPTION	QTY.
1	BFT-SENS-ECAT-M8	SensONE T15 6-axis F/T sensor with EtherCAT interface, best resolution and additional IMU	1
2	ACC-SENS-MOUNT	Screw mounting kit for SensONE	1
3	ACC-RJ45-M8-3M-ANGLE	3.0m Cat 5e cable with angled M8 connector	1
4	ACC-KIN-GEN3	Accessory adapter for Kinova Gen3 to ISO 9409-1-50-4-M6 cobot flange with tool IO and ethernet	1
8	ACC-POE-B	PoE injector 802.3af mode B	1
9	ACC-PSU-12V-GLOBAL	Power adapter 12V 12W global plug	1

#### MOUNTING STEPS

1. Connect the Kinova adapter to the Gen3 robotic arm using the flex cable included on the ACC-KIN-GEN3
2. Properly place the adapter (ASS-KIN-GEN3) on the robotic arm, making sure to place the connector face on the opposite side from where the camera of the robot is located.
3. Use the screws included on the accessory to properly attach the adapter.
4. Place the Bota FT sensor on top using the correct mount (ACC-SENS-MOUNT), which includes screws and the pin.

#### NOTES



Hagenholzstrasse 85, 8050, Zurich, Switzerland  
Email: [info@botasys.com](mailto:info@botasys.com)  
Website: [www.botasys.com](http://www.botasys.com)  
©2022 BOTA Systems AG. All rights reserved.

WEIGHT 843 grams

#### PRODUCT DESCRIPTION

Kinova GEN3 SensONE Kit

ORDERING NUMBER	DRAWING NUMBER	MODEL REVISION	DRAWING REVISION
KIT-SECAT-GEN3	KIT-SECAT-GEN3	A	A
SCALE: 1:20		PAGE: 8 / 8	

A3