

4 x Ø 5.00 THRU
M6 THRU
✓ Ø 6.05 X 90°, Near Side
Ø 6.00 H7 ↕ 7.00
✓ Ø 6.05 X 90°, Near Side

MOUNTING STEPS:

Install the FT Sensor:

Attach the FT sensor to the robot flange of the Franka robot using the ACC-SENS-MOUNT included in the kit. Ensure that all contact surfaces are clean and that the holes on the flange and the sensor are perfectly aligned to prevent misalignment or damage during the mounting process.

Connect the Cable:

Use the supplied ACC-RJ45UR-M8-ANGLE cable to connect the FT sensor to the designated USB Pro or POE. Check the datasheet provided in the kit for detailed instructions to ensure proper cable orientation and secure connection points.

Secure the Cable:

Organize the cable routing by using the ACC-SENS-CLAMP to avoid loose or dangling cables. Attach the clamp securely along the cable's path, keeping it safe from movement or interference with other robot components.

NOTES

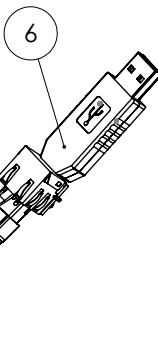
ITEM NO.	PART NUMBER	DESCRIPTION	QTY.
1	BFT-SENS-SER-M8	SensONE T15 6-axis F/T sensor with Serial interface	1
2	ACC-SENS-MOUNT	Screw mounting kit for SensONE	1
3	ACC-SENS-CLAMP	SensONE cable holder for the sensor cable and a 5mm auxiliary cable	1
4	ACC-RJ45-M8-3M-ANGLE	3.0m Cat 5e cable with angled M8 connector	1
5	PRT-SNPF-SNPM-8P-FK	Extension cable with binder snap-in 8 pin connector for Franka FR3	1
6	ACC-USB-PROG	USB to RS422 Serial adapter with RJ45 connector	1



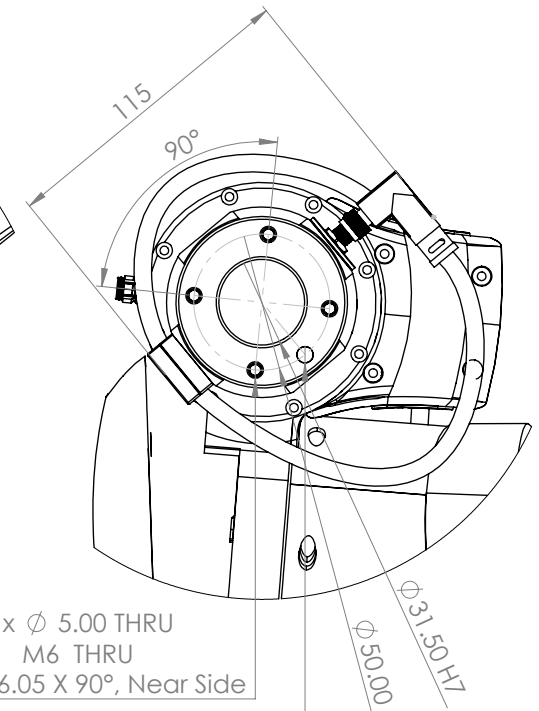
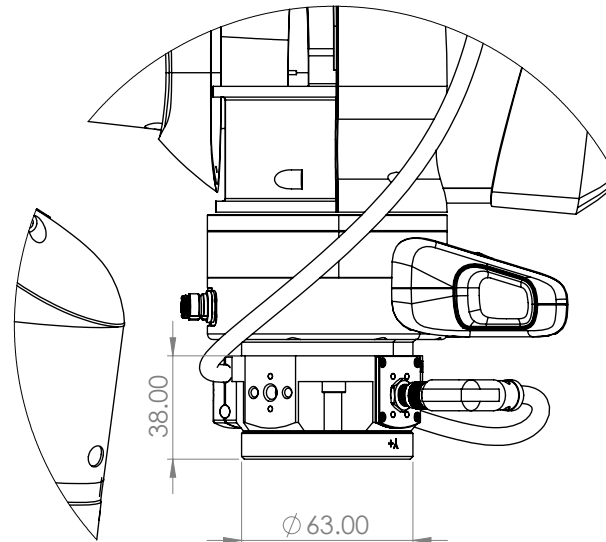
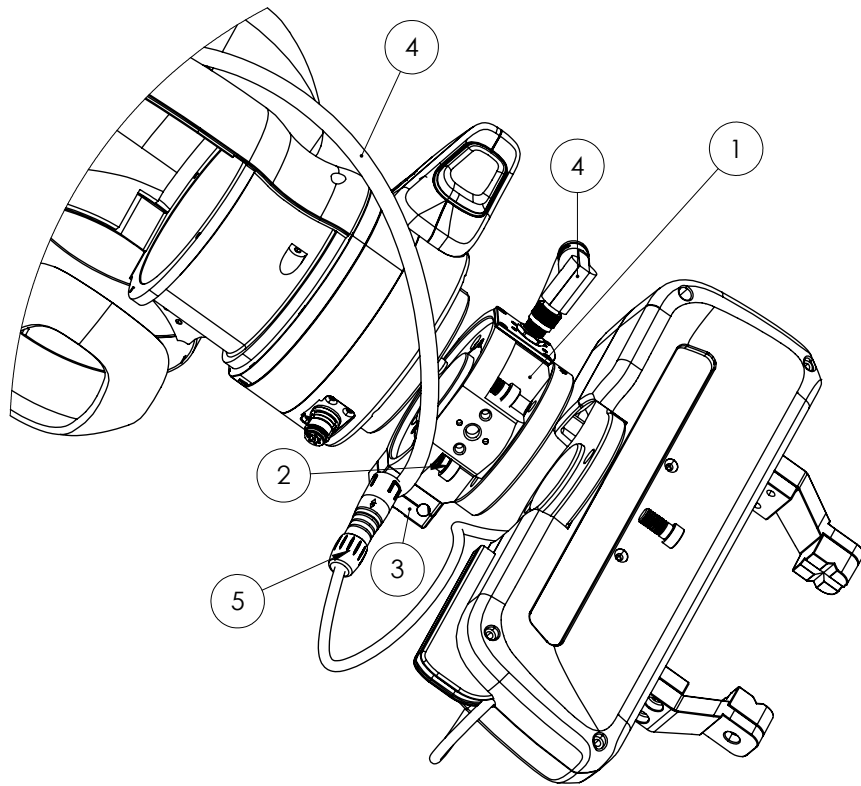
Hagenholzstrasse 85, 8050, Zurich, Switzerland
Email: info@botasys.com
Website: www.botasys.com
©2022 BOTA Systems AG. All rights reserved.

WEIGHT 620.00 grams

	NAME	DATE	MODEL DESCRIPTION			
DRAWN	JC	16/01/2025	Franka SensONE kit			
CHECKED	IP	17/01/2025	MODEL NUMBER	DRAWING NUMBER	MODEL REVISION	DRAWING REVISION
APPROVED			KIT-SENS-SER-FRK	KIT-SENS-SER-FRK	A	
MATERIAL	-		SCALE: 1/2	PAGE: 1 / 4	A3	

[illegible]

	NAME	DATE	MODEL DESCRIPTION			
DRAWN	JC	16/01/2025	Franka SensONE kit			
CHECKED	IP	17/01/2025	MODEL NUMBER	DRAWING NUMBER	MODEL REVISION	DRAWING REVISION
APPROVED			KIT-SENS-ECAT-FRK	KIT-SENS-ECAT-FRK	A	
MATERIAL			SCALE: 1/2	PAGE: 3/4	A3	



4 x \varnothing 5.00 THRU
M6 THRU
✓ \varnothing 6.05 X 90°, Near Side

 \varnothing 6.00 H7 ∇ 7.00
✓ \varnothing 6.05 X 90°, Near Side

MOUNTING STEPS:

Install the FT Sensor:

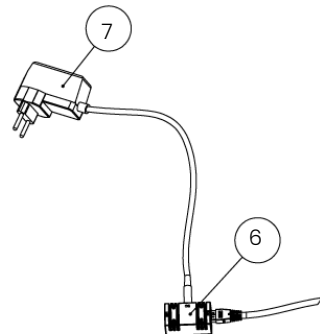
Attach the FT sensor to the robot flange of the Franka robot using the ACC-SENS-MOUNT included in the kit. Ensure that all contact surfaces are clean and that the holes on the flange and the sensor are perfectly aligned to prevent misalignment or damage during the mounting process.

Connect the Cable:

Use the supplied ACC-RJ45UR-M8-ANGLE cable to connect the FT sensor to the designated USB Pro or POE. Check the datasheet provided in the kit for detailed instructions to ensure proper cable orientation and secure connection points.

Secure the Cable:

Organize the cable routing by using the ACC-SENS-CLAMP to avoid loose or dangling cables. Attach the clamp securely along the cable's path, keeping it safe from movement or interference with other robot components.



NOTES

ITEM NO.	PART NUMBER	DESCRIPTION	QTY.
1	BFT-DENS-ECAT-M8	SensONE T5 6-axis F/T sensor with EtherCAT interface	1
2	ACC-SENS-MOUNT	Screw mounting kit for SensONE	1
3	ACC-SENS-CLAMP	SensONE cable holder for the sensor cable and a 5mm auxiliary cable	1
4	ACC-RJ45-M8-3M-ANGLE	3.0m Cat 5e cable with angled M8 connector	1
5	PRT-SNPF-SNPM-8P-FK	Extension cable with binder snap-in 8 pin connector for Franka FR3	1
6	ACC-POE-B	PoE injector 802.3af mode B	1
7	ACC-PSU-12V-GLOBAL	Power Adapter 12V 12W global plug	



Hagenholzstrasse 85, 8050, Zurich, Switzerland
Email: info@botasys.com
Website: www.botasys.com
©2022 BOTA Systems AG. All rights reserved.

WEIGHT 620.00 grams

NAME	DATE	MODEL DESCRIPTION
DRAWN JC	16/01/2025	Franka SensONE kit
CHECKED IP	17/01/2025	MODEL NUMBER
APPROVED		KIT-DENS-ECAT-FRK
		SCALE: 1/2
		PAGE: 4 / 4
		A3